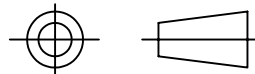


DRAWING No.  
151295

SHT. 1  
OF  
SHTS.

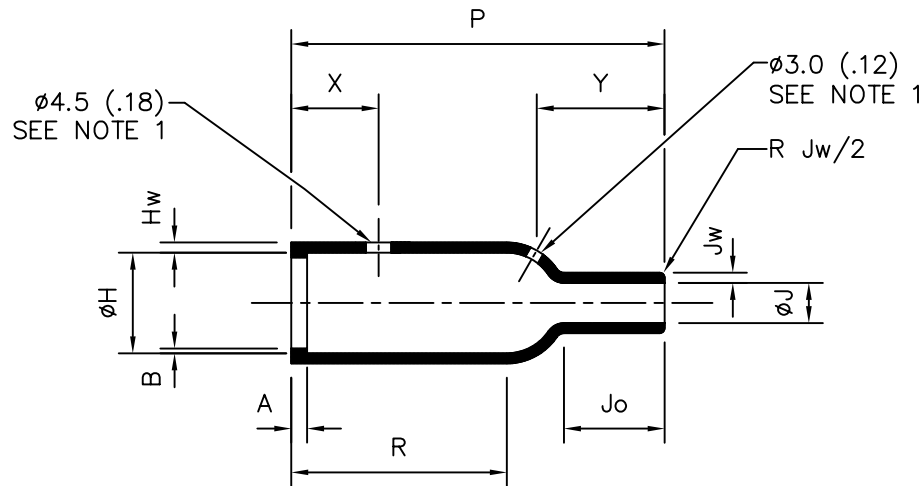
© THE COPYRIGHT OF THIS DRAWING IS RESERVED BY HELLERMANN TYTON. IT IS ISSUED ON CONDITION THAT IT IS NOT COPIED, REPRODUCED OR DISCLOSED TO A THIRD PARTY EITHER WHOLLY OR IN PART WITHOUT THE CONSENT IN WRITING OF HELLERMANN TYTON

THIRD ANGLE PROJECTION



BS 8888

DO NOT SCALE  
IF IN DOUBT ASK



UNCONTROLLED COPY  
22/05/07

\* PREFERRED EXPANSION 36mm (1.42in)

1. FILLER PORT HOLE AND FILLER PORT VENT  
ARE OPTIONAL.

NOTES: -

PART No.	EXPANDED DIAMETER'S (AS SUPPLIED)		RECOVERED DIAMETER'S		RECOVERED DIMENSIONS (FULLY SHRUNK)								
	øH	øJ	øH	øJ	±10%			±20%			±10%		
					P	R	Jo	A	B	Hw	Jw	X	Y
101-4	31.0* (1.22*)	31.0* (1.22*)	17.8 (0.70)	7.1 (0.28)	66.0 (2.60)	38.1 (1.50)	17.8 (0.70)	3.0 (0.12)	1.0 (0.04)	2.0 (0.08)	2.0 (0.08)	15.2 (0.60)	24.5 (0.96)
101-4A	34.0 (1.34)	34.0 (1.34)	17.8 (0.70)	7.1 (0.28)	66.0 (2.60)	38.1 (1.50)	17.8 (0.70)	3.0 (0.12)	1.0 (0.04)	2.0 (0.08)	2.0 (0.08)	15.2 (0.60)	24.5 (0.96)
101-4D	28.0 (1.10)	10.0 (0.39)	17.8 (0.70)	7.1 (0.28)	66.0 (2.60)	38.1 (1.50)	17.8 (0.70)	3.0 (0.12)	1.0 (0.04)	2.0 (0.08)	2.0 (0.08)	15.2 (0.60)	24.5 (0.96)
101-4X	31.0 (1.22)	31.0 (1.22)	17.8 (0.70)	7.1 (0.28)	47.0 (1.85)	15.0 (0.59)	17.8 (0.70)	3.0 (0.12)	1.0 (0.04)	2.0 (0.08)	2.0 (0.08)	15.2 (0.60)	24.5 (0.96)
101-41	45.0 (1.77)	33.0 (1.30)	17.8 (0.70)	7.1 (0.28)	66.0 (2.60)	38.1 (1.50)	17.8 (0.70)	3.0 (0.12)	1.0 (0.04)	2.0 (0.08)	2.0 (0.08)	15.2 (0.60)	24.5 (0.96)
101-43	57.7 (2.27)	31.0 (1.22)	17.8 (0.70)	7.1 (0.28)	66.0 (2.60)	38.1 (1.50)	17.8 (0.70)	3.0 (0.12)	1.0 (0.04)	2.0 (0.08)	2.0 (0.08)	15.2 (0.60)	24.5 (0.96)

11	P913	S.R.A	29/07/02
10	P783	SA	18/10/97
9	P778	SA	15/09/97
8	P761	SMP	15/04/97
7	P741	SMP	20/12/96
ISSUE	NOTE No.	DRAWN	DATE

HellermannTyton

Pennycross Close, Plymouth, Devon, England PL2 3NX  
Tel (01752) 701261 Fax (01752) 790058

NAME	ASC	SCALE	NTS	ADHESIVE	A3 ORIGINAL SHEET SIZE 420mm x 297mm	SHT. 1 OF SHTS.
DATE	14/02/1992	DIMS IN	mm (in)			
TITLE	BOTTLE SLEEVE			PART No.	DRAWING No.	
				101	151295	