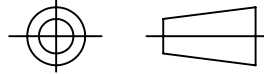


DRAWING No.  
**151669**

SHT. 1  
OF  
SHTS.

© THE COPYRIGHT OF THIS DRAWING IS RESERVED BY HELLERMANN TYTON. IT IS ISSUED ON CONDITION THAT IT IS NOT COPIED, REPRODUCED OR DISCLOSED TO A THIRD PARTY EITHER WHOLLY OR IN PART WITHOUT THE CONSENT IN WRITING OF HELLERMANN TYTON.

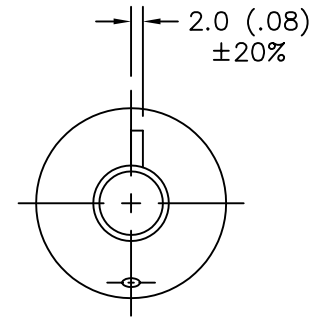
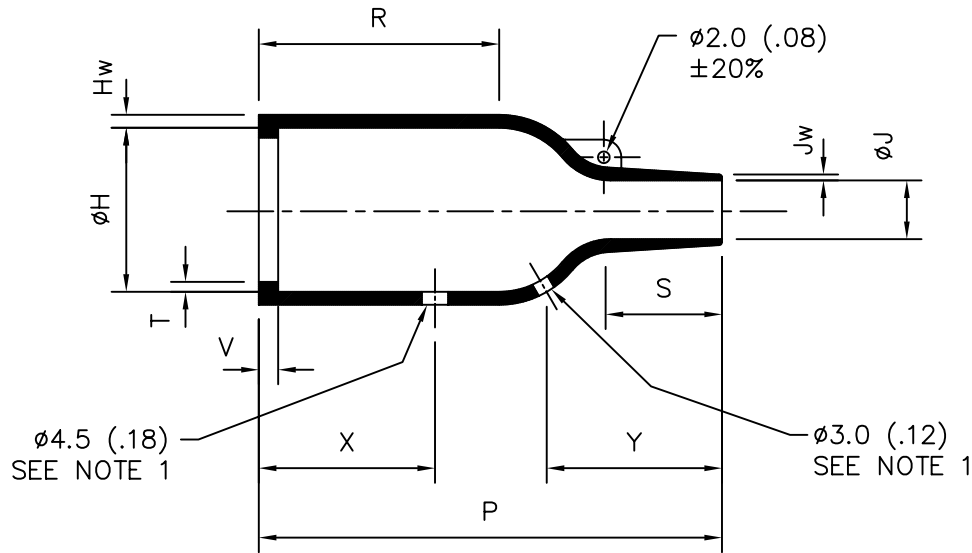
THIRD ANGLE PROJECTION



BS 8888

DO NOT SCALE  
IF IN DOUBT ASK

Q.A.	H/S SETT
H/S Q.A.	REL. INSP.
H/S PROD	EXT.ISS.CODE



UNCONTROLLED COPY  
22/05/07

VG 95 343	PART No.	EXPANDED DIAMETERS (AS SUPPLIED)		RECOVERED DIAMETERS		RECOVERED DIMENSIONS								
		ØH (MIN)	ØJ (MIN)	ØH (MAX)	ØJ (MAX)	P ±10%	R NOM	S	T ±20%	V MAX	Hw ±20%	Jw ±30%	X ±20%	Y
T06 A 007A	158-41	60 (2.36)	60 (2.36)	35 (1.38)	16 (.63)	90 (3.54)	32 (1.26)	38 (1.50)	1.7 (.07)	3.3 (.13)	3.2 (.13)	1.5 (.06)	12 (.47)	50 (1.97)
T06 B 007A	158-42	60 (2.36)	60 (2.36)	35 (1.38)	16 (.63)	110 (4.33)	52 (2.05)	38 (1.50)	1.7 (.07)	3.3 (.13)	3.2 (.13)	1.5 (.06)	50 (1.97)	32 (1.26)
T06 C 002A	158-43	60 (2.36)	60 (2.36)	35 (1.38)	16 (.63)	130 (5.12)	72 (2.83)	38 (1.50)	1.7 (.07)	3.3 (.13)	3.2 (.13)	1.5 (.06)	52 (2.05)	50 (1.97)
	158-44	70 (2.76)	70 (2.76)	35 (1.38)	16 (.63)	130 (5.12)	72 (2.83)	38 (1.50)	1.7 (.07)	3.3 (.13)	3.2 (.13)	1.5 (.06)	52 (2.05)	50 (1.97)
	158-46	45 (1.77)	22 (.87)	35 (1.38)	16 (.63)	130 (5.12)	72 (2.83)	38 (1.50)	1.7 (.07)	3.3 (.13)	3.2 (.13)	1.5 (.06)	52 (2.05)	50 (1.97)
	158-47	67.1 (2.64)	35.1 (1.38)	35 (1.38)	16 (.63)	90 (3.54)	32 (1.26)	38 (1.50)	1.7 (.07)	3.3 (.13)	3.2 (.13)	1.5 (.06)	12 (.47)	50 (1.97)

1. FILLER PORT HOLE AND FILLER PORT VENT ARE OPTIONAL.

NOTES: -

7	P915	S.R.A	05/08/02
6	P853	SA	26/08/99
5	P783	SMP	19/10/97
4	P761	SMP	15/04/97
3	P751	SMP	22/01/97
ISSUE	NOTE No.	DRAWN	DATE

**HellermannTyton**

Pennycross Close, Plymouth, Devon, England PL2 3NX  
Tel +44 (0) 1752 701261 Fax +44 (0) 1752 790058

NAME	PF	SCALE	NTS	ADHESIVE	A3 ORIGINAL SHEET SIZE 420mm x 297mm	SHT. 1 OF SHTS.
DATE	14/02/1992	DIMS IN	mm (in)			
TITLE	SINGLE WAY BOTTLE SLEEVE			PART No.	DRAWING No.	
				158-41/42/43	151669	